



ACCESSORIES





Label Finishing with DTM Print



With label finishing solutions from DTM Print you can easily



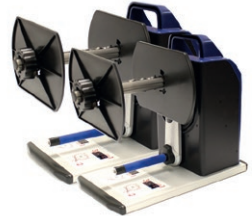
**lamine, cut
and more**
with the DTM LF140e



**apply labels to
your product**
with the AP Series



**unwind and
rewind**
with the DTM Winder Series



LF140e

LABEL FINISHING SYSTEM



Made in Europe
With an extended
3-year warranty



Flexibility
Cut any size and shape
you like



Cut Speed
Max. 600 m/s (24"/s)
in all directions



Resistance
Lamination increases the
durability of labels

Digital on-demand label converting machine

The DTM LF140e is a compact, out of the box, finishing system that makes the converting process of your continuous label roll stock easier than ever. Unwinding, laminating, digital die-cutting, waste matrix removing, slitting and rewinding the finished rolls – all combined in a powerful machine which takes only minutes to set-up and run.

Unlike other systems the LF140e features optical black mark registration through an integrated camera and LED spotlight, which guarantees an accurate repetitive precision even with complex cuts.

In addition, the control unit of a large 11.6" touch screen really stands out. USB, Ethernet and also WLAN connectivity for accessing external cutting jobs is also included.

Keyfacts

- ▶ Open frame construction – easy media loading with an open front side
- ▶ Ultrasonic media tension control – means no moveable sensor parts to fail
- ▶ Camera sensing – more accuracy and speed in cutting
- ▶ Blank label production – converting blank stock into die-shaped rolls for printing afterwards
- ▶ Matrix pressure roller – to avoid media jam on complex matrix shapes by flattening the uptake material
- ▶ Remote assistance – if connected to the internet DTM Print offers online support and remote Firmware/Software upgrades



What's in the box ?

- ▶ Completely assembled and pre-installed LF140e
- ▶ Steel workbench with mounted rollers
- ▶ Instructions

More information

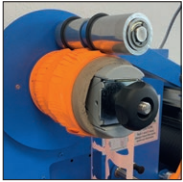
Scan the QR code to see all videos related to the LF140e.

Visit dtm-print.eu for detailed information.



LF140e

LABEL FINISHING SYSTEM



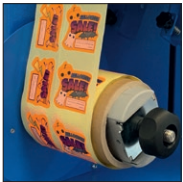
Waste Press Roll
Press roll reduces the inflation of the roll.



Matrix Removal



Liner Slitting
Can hold up to 6 blades to slit the web into finished rolls.

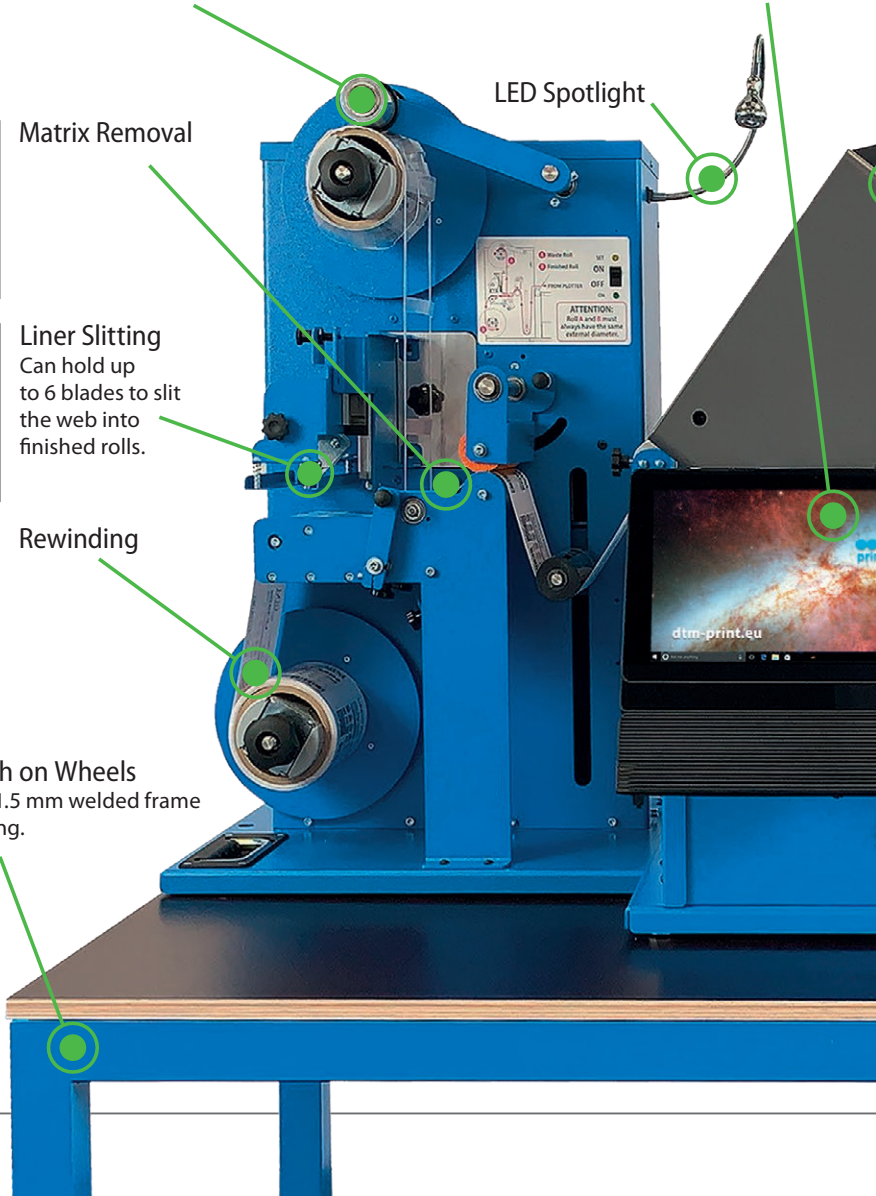


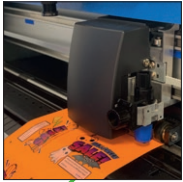
Rewinding

Solid Steel Bench on Wheels
45 mm x 45 mm x 1.5 mm welded frame with powder coating.

Industrial-Grade 11.6" Touch Screen
Windows 10 based with extended connectivity:
6 x USB 2.0/3.1, RJ-45 1 GB Ethernet and WLAN.

LED Spotlight

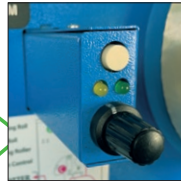




Digital Die-Cutting
With a maximum cutting speed of 600 mm/s and up to 450 gf cutting force for accurate results.



Laminating
Optional laminate film to protect your labels against harsh environments or applying specific surface structure as an extra finish.



Media Tension Control
Measures the outside diameter of the rolls and adjusts the web tension.



Roll Feed
Printed media requires an imprinted black mark (2 mm x 2 mm or 4 mm x 4 mm), unprinted media can be cut continuously.

Solid Wooden Desktop
Lower storage shelf made of 15 mm multilayer panel with block screen print.

Technical Specifications – Comparison Table

LF140e LABEL FINISHING SYSTEM

| | |
|---|---|
| Media Width | 100 mm - 140 mm (3.93" - 5.51") |
| Max. Media Thickness | 0.23 mm (0.05 mil) |
| Max. Cutting Width | 122 mm (4.8") |
| Max. Cut Speed | 600 mm/s (24"/s) in all directions |
| Label Length | 10 mm - 350 mm (0.39" - 13.77") |
| Min. Slitting Width | 19 mm (0.75") |
| Number of Slitting Blades | Max. 6 |
| Supply Roll (Input & Output) | Up to 200 mm (7.78") OD with a 76.2 mm (3") ID |
| Indicator Lights | Power, Stop/Go |
| Controls | Integrated 11.6" touch screen PC |
| Power Requirements | 100-240 V AC (50/60 Hz) |
| Power Consumption | Idle: 29 W Average: 60 W |
| Certifications | UL, UL-C, CE, FCC Class A, RoHS, UKCA |
| Weight | LF140e: 105 kg Workbench: 49 kg Total: 210 kg |
| Dimensions (WxHxD) | LF140e: 116 cm x 68 cm x 78 cm Workbench: 124 cm x 79 cm x 88 cm Shipping palette: 137 cm x 93 cm x 101 cm |
| What's in the Box | LF140e Label Finishing System (pre-assembled), two multiplex workbench plates, steel workbench on wheels, installed 12" touch screen PC, calibration tools, instructions, power cable |
| Warranty | 36 months* (after product registration, for devices purchased in EU/ EFTA countries and UK) |
| Manufacturer | DTM Print GmbH |

* Wearable parts 1 year

LF140e Plotter

LABEL FINISHING SYSTEM

| | |
|-----------------------------------|--|
| Linear Cut Speed | Dependent on shape complexity |
| Programmable Cutting Force | 4.41 N (450 gf) in 38 steps |
| Cut Precision | ± 0.3 mm (0.012") |
| Drive Method | Digital servo drive |
| Test Cut Function | Yes |
| Black Mark Registration | Camera recognition via 2 mm x 2 mm or 4 mm x 4 mm black mark |
| Display | Graphic type LCD with backlight (240 x 128 dots) |
| Cut ability | Printed and blank media |
| Data Interface | USB 2.0, Ethernet |
| CPU | 32-bit CPU |
| Interface & Software | DTM Print LF140e Label Finishing Software |
| Certifications | UL, UL-C, CE, FCC Class A, RoHS, UKCA |
| Manufacturer | Graphtec |

AP-Series

LABEL APPLICATORS



Compact Size
Fit on desks and
countertop



Models for
Flat and round
containers available



Application Speed
Up to 1,500 containers per hour



Label Range
Works with virtually any label
material including clear labels

Accurate labelling – quick and easy

Label applicators are a core component of labelling machines and systems in the packaging industry and help to increase your production throughput. They are also known as labelling units and are used to apply and dispense self-adhesive labels in many different applications. Product and identification labels are applied easily, straight and without wrinkles or folds in exactly the desired location, giving finished products a highly professional look.

It is well known that the better and more professional your labels look, the more you will sell. This includes, that labels are also accurately labelled.

With quick setup and easy operation, the AP-Series Label Applicators significantly increase the number of containers that can be labelled per hour versus manually applying labels. With their compact size they fit on most desks and countertops and are built with heavy-duty sheet metal and steel for long product life.

The AP-Series Label Applicators are the perfect accessories for virtually any roll-wound label including clear labels, no matter the printing technology.

Speed up your production and sell more of your products:

1. Insert the label roll and set the guides.
2. Place your container in the machine.
3. Pull the arm/press the footswitch/button and your label is applied.

What's in the box?

- ▶ Label applicator
- ▶ Instructions



DTM AP380e features a liner rewriter (for an organised production line)

More information

Scan the QR code to see all videos related to the applicators.

Visit dtm-print.eu for detailed information.



AP-Series

LABEL APPLICATORS



AP550e Label Applicator for Flat Containers

Apply labels at speeds of up to 500 containers/hour.

Key facts

- ▶ For flat surfaces, such as rectangular or many tapered bottles, boxes, packages, bags, pouches, lids and more
- ▶ No air-pressure supply required (no expensive, noisy and maintenance-prone air compressors)
- ▶ LED display with built-in counter

Optional Modification

For all unevenly shaped or very small containers that would be difficult to hold during labelling, we recommend a customised holder. You can make this at home with the appropriate materials or use our expertise and experience. Do not hesitate to contact us about the right AP550e holder for your container.



With the built-in LED display users can easily set-up variable spacings, save up to nine different container offsets and see the number of applied labels.

AP360e Label Applicator for Round Containers

Apply labels at speeds of up to 1,200 containers/hour.

Key facts

- ▶ For cylindrical containers, including round bottles, cans, jars and tubes
- ▶ Built-in spring-loaded pressure arm applies labels firmly
- ▶ Securely affix labels even on very small radius containers such as lip balm tubes

AP360e is the base model, which applies single labels at a time.



DTM AP380e Label Applicator with Liner Rewinder

Apply labels at speeds of up to 1,500 containers/hour.

Key facts

- ▶ Features a liner rewriter that automatically rewinds the waste liner, keeping the production line clean and organised
- ▶ Operates with button or footswitch
- ▶ Enables two stop modes which stop the container either immediately or delayed after label application

AP380e is the advanced model, 30% faster than the AP360e and applies two different labels with variable spacing to a single container, perfect for alternating labels as used on e.g. wine bottles. A built-in LED counter, memory for up to nine front-to-back label offsets is also included as well as an integrated label rewriter.



We're all different and so are the products we want our labels to stick on. Therefore, don't hesitate to contact us for optional modifications on the AP-Series to make it fit your needs.

Technical Specifications – Comparison Table

| | AP 550e LABEL APPLICATOR |
|--|--|
| Number of Labels Dispensed per Trigger | 1 |
| Speed | Up to 500 containers per hour |
| Container Shape | Flat and many tapered |
| Container Diameter | 0.05 mm - 203 mm (0.002" - 8") |
| Container Width | 19 mm - 310 mm (0.75" - 12.2")* |
| Container Height | 0.05 mm - 203 mm (0.002" - 8")** |
| Label Width | 19 mm - 101.6 mm (0.75" - 4") |
| Label Height | 19 mm - 152.4 mm (0.75" - 6") |
| Supply Roll | Up to 203 mm (8") OD with a 50.8 mm (2") to 76.2 mm (3") ID wound out, die-cut with waste removed, black mark or gap (clear labels require black mark) |
| Sensor Type | Optical sensor |
| Indicator Lights | LED display with built-in up/down counter and number of saved jobs |
| Controls | Mode, Recall/Reset, Up, Down |
| Power Requirements | 100-240 V AC (50/60 Hz), 12 V DC, 5.0 A |
| Power Consumption | Idle: 4.2 W Average: 20 W |
| Certifications | UL, UL-C, CE, FCC Class A, RoHS, UKCA |
| Weight | 10.9 kg |
| Dimensions (WxHxD) | 305 mm x 541mm x 256 mm - 391 mm |
| What's in the Box | AP550e Label Applicator, instructions, universal power supply |
| Warranty | 36 months (after product registration, for devices purchased in EU/EFTA countries and UK) |
| Manufacturer | Primera Technology, Inc. |

* Container may overhang platform to the front and/or either side.

** Containers shorter than 20.3 mm may require adaptive spacers.

| <h1>AP360e</h1> <p>LABEL APPLICATOR</p> | <h1>AP380e</h1> <p>LABEL APPLICATOR</p> |
|---|--|
| 1 | 1 or 2 – front and back |
| Up to 1,200 containers per hour | Up to 1,500 containers per hour |
| Cylindrical and many tapered | |
| 15 mm - 170 mm (0.6" - 6.7") | |
| 25.4 mm - 238 mm (1" - 9.4") | |
| 15 mm - 170 mm (0.6" - 6.7") | |
| 19.1 mm - 209 mm (0.75" - 8.25") | |
| 19.1 mm - 609.6 mm (0.75" - 24") | |
| Up to 203 mm (8") OD with a 50.8 mm (2") to 76.2 mm (3") ID wound out, die-cut | |
| Mechanical sensor | |
| - | LED display with built-in up/down counter and number of saved jobs |
| Footswitch | Footswitch, Push button, Mode, Recall/Reset, Up, Down |
| 100-240 V AC (50/60 Hz), 12 V DC, 5.0 A | |
| Idle: 1.6 W Average: 20 W | |
| UL, UL-C, CE, FCC Class A, RoHS, UKCA | |
| 7.26 kg | 9.07 kg |
| 340 mm x 226 mm x 328 mm | 340 x 226 x 508 mm |
| AP360e Label Applicator, instructions, universal power supply | DTM AP380e Label Applicator, instructions, universal power supply |
| 36 months (after product registration, for devices purchased in EU/EFTA countries and UK) | |
| Primera Technology, Inc. | DTM Print GmbH |

DTM Winder Series



Winding Speed

User adjustable, up to 30 m/min



Roll Width

Up to 220 mm (8.66")



Automatic Stop

When end of roll or another interruption occurs



Winding Direction Switch

For either label inside or outside

Label winding made easy

Winders from DTM Print make it easy to un- and rewind large quantities of labels. Double your unwind capacity and no longer self-rewind the labels by hand.

Key facts

They're perfect for use with virtually any desktop label printer, no matter the printing technology. The DTM Label Winder Series includes the following models:

- ▶ DTM RW-4 Label Rewinder
- ▶ DTM RW-7 Label Rewinder
- ▶ DTM RW-8 Label Rewinder

The lateral guides of all **DTM Label Winders** guarantee an optimal parallel, tight and straight winding, which is essential for further processing, e.g. in a labelling unit. There's no need to work by hand anymore!

Load an up to 220 mm (8.66") wide roll and double your unwind capacity. Larger rolls typically have lower costs per label and save time as reloading cycle decreases.

Each RW-4, RW-7 and RW-8 works as an unwinder, too!

What's in the box?

- ▶ Label winder
- ▶ 1.5", 2" and 3" core adaptors (RW-4/RW-7 only)
- ▶ Instructions

Tape the printed output onto a core of your choice, drop the dancer arm and start your job. Your labels will be rewound with perfect alignment and just the right amount of tension for either hand application or on a label applicator.

The **DTM UW-4 Passive Label Unwinder** works non-electric and stand-alone.

It's the perfect accessory if you want to increase your unwind capacity with up to 114.3 mm (4.5") wide rolls.



DTM UW-4 Passive Label Unwinder in combination with DTM FX510e Foil Imprinter

More information

Scan the QR code to see all videos related to the winders.

Visit dtm-print.eu for detailed information.



RW-4 RW-7

LABEL REWINDER LABEL REWINDER



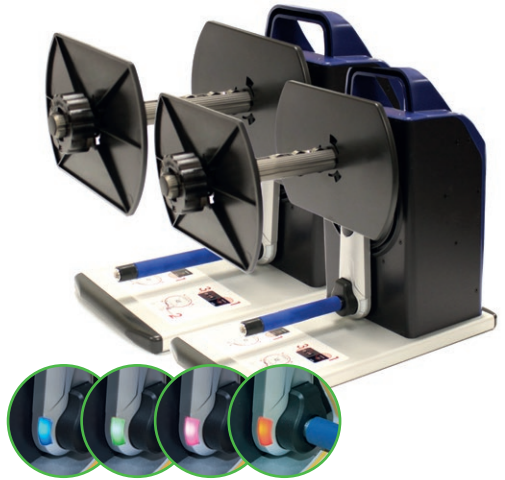
With modular cores the RW-4 and RW-7 Label Rewinder from DTM Print are your flexible companions for a time-saving workflow.

Key facts

- ▶ Modular core adaptors
- ▶ Coloured LED indicator provides operation status
- ▶ Usable as rewinder and unwinder by easily switching from "Inside" to "Outside" mode
- ▶ Gummed dancer arm attracts dust and keeps it off your label surface
- ▶ User adjustable winding speed of up to 355 mm/s (14"/s)



Load a roll with a width of up to 178 mm (7") to the RW-7 or one with up to 120 mm (4.72") width to the RW-4, either wound-in or wound-out. The arm can hold a roll weight of up to 5 kg and with the core adaptors you're super flexible. Easily change from 1" cores (without adaptor) to 1.5", 2" or 3" cores.



Wound In/Label Inside



Wound Out/Label Outside

RW-8

LABEL REWINDER



The RW-8 Label Rewinder from DTM Print is your perfect accessory for heavy duty jobs. It offers support for heavy rolls with its solid metal construction.

Key facts

- ▶ Supports up to 250 mm (10") OD with a roll weight of up to 8 kg
- ▶ Control panel allows the user to set a speed limit and winding directions
- ▶ User adjustable winding speed of up to 500 mm/s (19.6"/s)
- ▶ L-shaped support arm enables the use of heavy and wide rolls
- ▶ Usable as rewinder and unwinder by easily switching from "Face-In" to "Face-Out" mode



Control Panel



L-shaped support arm

The RW-8 Label Rewinder complements the DTM Winder Series in the upper range for up to 220 mm wide rolls. For heavy and very wide rolls an L-shaped support arm is included, which can be mounted in seconds if required.



Technical Specifications – Comparison Table

| | RW-4 LABEL REWINDER | RW-7 LABEL REWINDER |
|------------------------------|---|---|
| Winding Speed | Up to 355 mm/s (14"/s) | |
| Maximum Roll Width | 120 mm (4.72") | 177.8 mm (7") |
| Maximum Roll Diameter | 203.2 mm (8") | 152.4 mm (6") |
| Maximum Roll Weight | 5 kg | |
| Core Size | Coreless, 25.4 mm (1"), 38.1 mm (1.5"), 50.8" (2"), 76.2 mm (3") | |
| Indicator Lights | Power, Winding Mode, Alert | |
| Controls | Power, winding direction switch (Label Inside/Label Outside), speed adjustment wheel | |
| Power Requirements | 100 - 240V AC to 24 V DC, 2A, 50/60 Hz | |
| Power Consumption | Idle: 3.95 W Average: 13.3 W | Idle: 3.8 W Average: 12 W |
| Certifications | CE, RoHS, TÜV, FCC Class A, UKCA | |
| Weight | 5 kg | |
| Dimensions (WxHxD) | 180 mm x 303 mm x 349 mm | 180 mm x 303 mm x 394 mm |
| What's in the Box | RW-4 Label Rewinder, core adaptors (1,5", 2", 3"), universal power supply, instructions | RW-7 Label Rewinder, core adaptors (1,5", 2", 3"), universal power supply, instructions |
| Warranty | 36 months (after product registration, for devices purchased in EU/EFTA countries and UK) | |
| Manufacturer | DTM Print GmbH | |

Important Note: Pliability/flexibility/rigidity of the label is an important factor for the smooth transport of the label rolls in the rewriter. If the label is too flexible, no matter the thickness, it can cause uneven winding, slipping or stopping of the rewriter. Polypropylene, polyester and vinyl labels tend to be more flexible than paper labels. If you suspect the label stock is too flexible, it is recommended that the stock is tested on the rewriter before making any purchase decisions of label stock or the rewriter. Genuine DTM Label Stock substrates do not slip or cause any damage.

| RW-8 <small>LABEL REWINDER</small> | UW-4 <small>PASSIVE UNWINDER</small> |
|---|---|
| Up to 500 mm/s (19.6"/s) | - |
| 220 mm (8.66") | 120 mm (4.75") |
| 250 mm (10") | 254 mm (10") |
| 8 kg | 5 kg |
| 76.2 mm (3") | Works with virtually any roll core bigger than 25.4 mm (1") |
| Power, Winding Mode, Alert | |
| Power, winding direction buttons (Face-In/Face-Out), speed adjustment buttons | - |
| 100 - 240V AC to 24 V DC, 2.5 A, 50/60 Hz | Non-electric |
| Idle: 1.5 W Average: 3.45 W | - |
| CE, RoHS, FCC Class B, UKCA | - |
| 9 kg | 0.5 kg |
| 600 mm x 450 mm x 360 mm | 136 - 193 mm x 194 mm x 252 mm |
| RW-8 Label rewinder, power supply, instructions | UW-4 Passive Unwinder, core adaptor (3"), instructions |
| 36 months (after product registration, for devices purchased in EU/EFTA countries and UK) | |
| DTM Print GmbH | |

Simplified Labelling Process

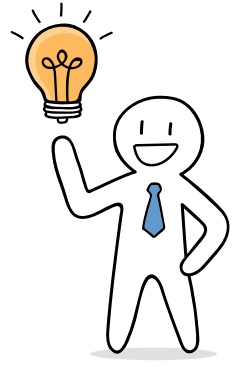
Traditional Process:

1. Design your label
2. Place an order
3. Proof and change label
4. Wait for delivery
5. Stock all of your different product labels
6. Apply labels
7. Throw away unused labels



Process with DTM Print:

1. Design your label
2. Print on-demand
3. Apply labels



Your design on Mac or Windows

Print your full-colour labels on-demand

Your advantages:

- ▶ High resolution full-colour labels
- ▶ Only print the number of labels you need; with no minimum quantities
- ▶ Skip delivery times and extra stock costs for different label layouts
- ▶ No wastage of labels after product label changes
- ▶ Print graphics, photos, text and barcodes

Print & design your label:

- ▶ You are free to choose any design program you prefer
- ▶ Print your labels directly from your design program
- ▶ Use label design applications like NiceLabel or BarTender to take advantage of extra features, such as modified templates, variable data and any barcode type





Your printed labels



Apply your labels semi-automatically

Fast and easy:

- ▶ Set the guides
- ▶ Place your container in the machine
- ▶ Press footswitch or pull the arm and your label is applied



Your labelled products



LOOKING FOR LABEL PRINTERS?

We're happy to find the best labelling solution for you and your business!

COMPREHENSIVE ADVICE?

✉ sales@dtm-print.eu

MORE INFORMATION:

🌐 supplies.dtm-print.eu



Stay up to date and follow us on social media



DTM Print GmbH
Mainzer Strasse 131
65187 Wiesbaden
Germany
+49 611 927770
sales@dtm-print.eu
dtm-print.eu

